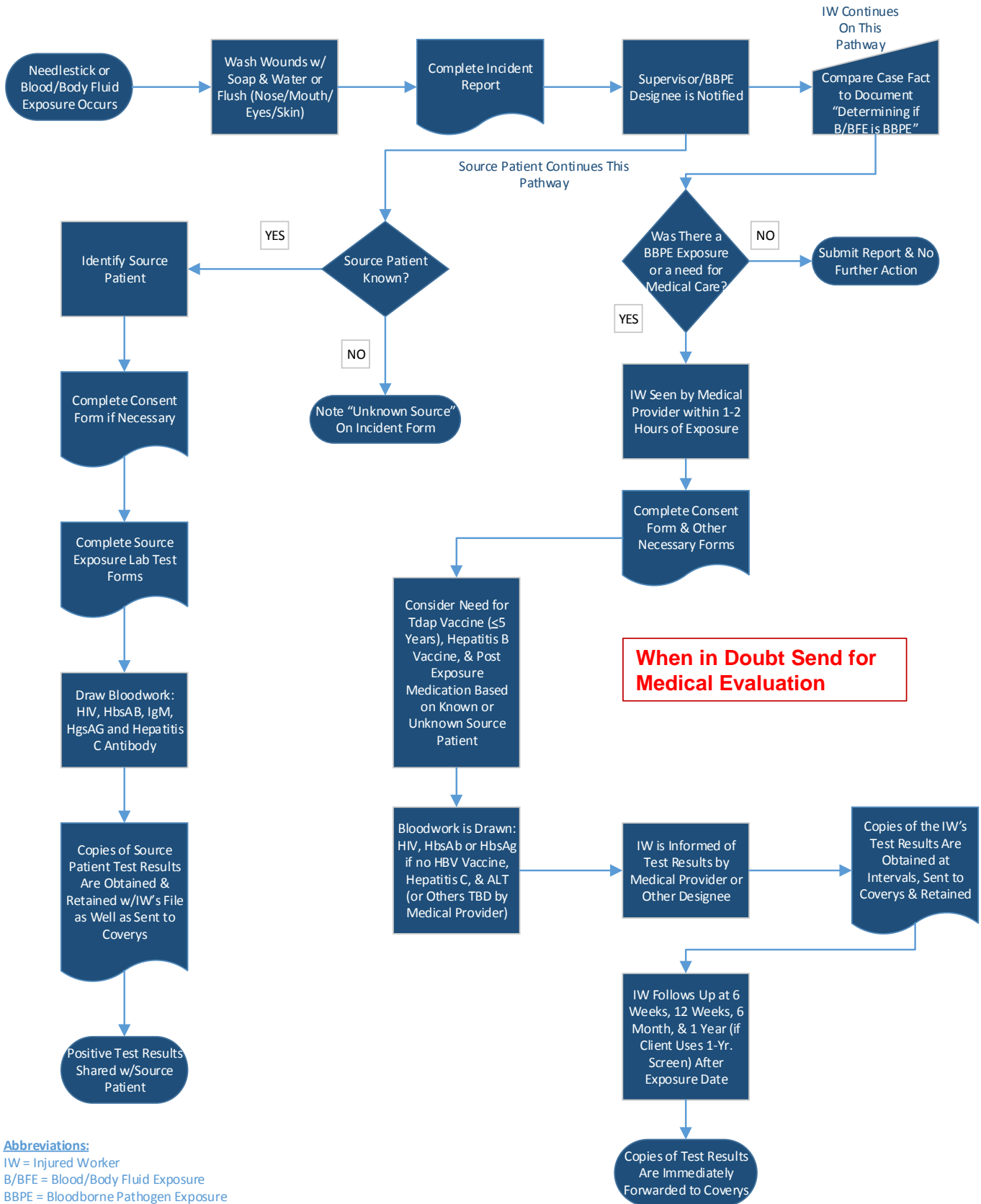


Needlestick & Blood/Body Fluid Exposure Healthcare Facility Sample Process



This document is a work product of Coverys Workers' Compensation Services. This information is intended to provide general guidelines for risk management. It is not intended and should not be construed as legal or medical advice. Your organization should add to and modify this tool to address the compliance standards and regulations applicable in your state or organization.